

Cut out sub-floor to counter sink Cold lead Blocks & Thermostat Floor Sensor

Secure Block 1 in position for heater to be rolled out into Section 1 of floor.

Roll out heater into Section 1 of floor.



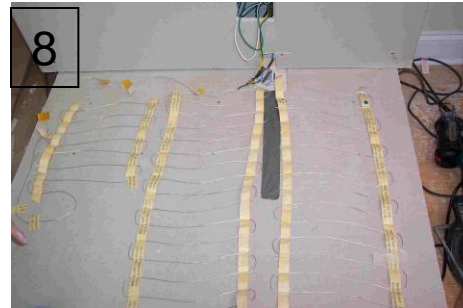
Cut or tear adhesive tape at outer edge to allow heater to be turned into Section 2 of floor.

Cut or tear adhesive tape on inner edge to allow heater to be turned into Section 2 of floor.

Turn heater into Section 2 of floor.



Cut or tear adhesive tape as required to fill all floor sections.



Cut or tear adhesive tape as required to create a "Hot tail" to return Block 2 to cut out in sub-floor. Secure Block 2 alongside Block 1 so that cold leads can be pulled up to Thermostat through conduit in dry-wall.